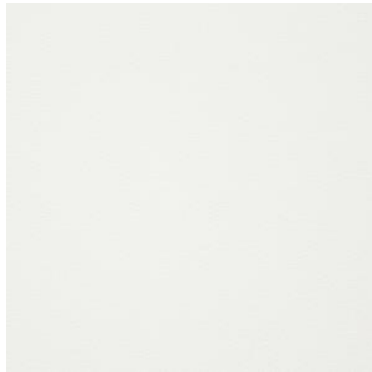




P O Box 51 964 Pakuranga Auckland 2140  
27a Bowden Road Mt Wellington Auckland 1060  
Tel 09 273 1524  
Fax 09 273 1525  
Web [www.kermac.co.nz](http://www.kermac.co.nz)

**Choose from the KerMac Swiss CDF Compact Laminate Range**

**13mm Compact Laminate**



White



Light Grey



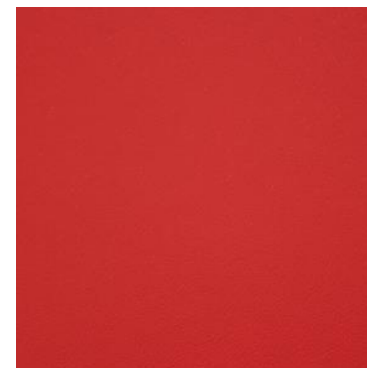
Graphite



Anthracite



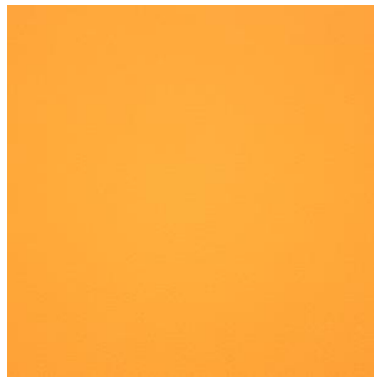
Atoll Blue



Coral Red



P O Box 51 964 Pakuranga Auckland 2140  
27a Bowden Road Mt Wellington Auckland 1060  
Tel 09 273 1524  
Fax 09 273 1525  
Web [www.kermac.co.nz](http://www.kermac.co.nz)



Jaffa



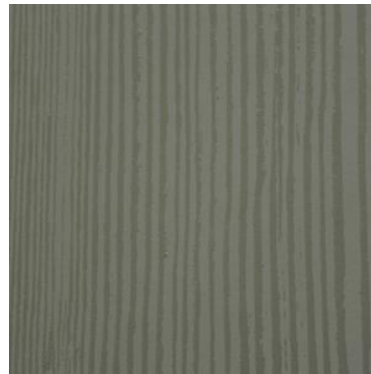
Lime



Aluminium



Concorde



Graphite SD



Atoll Blue SD



Coral Red SD