

K-FLOORMOUNTED

The K-Floormounted system keeps the stylish and smooth lines of KerMac's latest designs while also utilizing an overhead rail and stainless steel blade surrounds. This is a unique design that ensures superior stability. Design comes in Compact Laminate, Laminex Structural board HPL, Laminex HPL and Melteca laminate and is able to be used in most building environments. Hardware includes rise and fall hinges, stainless steel locks, fine line jointers and stainless steel surrounds.



LAMINATE TO CHOOSE FROM:

HIGH PRESSURE LAMINATES

Laminex
Laminex Structural Board
Formica

LOW PRESSURE LAMINATES

Melteca
Melamine

COMPACT LAMINATES

KerMac Compact
Laminex Compact

APPLICATIONS

General Purpose
High End Offices
Commercial
Function Centres
Gyms
Wet and High humidity areas (Compact only)

FEATURES

Stainless Steel wrapped pedestals
Anodised Aluminium channels
Stainless Steel locks, coat hooks and fastenings



STANDARD MATERIALS

18mm/30mm thick MDF laminated board
13mm Compact Laminate
Non-standard facing panels made to order
For high humidity areas Marine plywood is available
Edge-banded laminated board

Optional Accessories:

Toilet roll holders
Grab Rails
Pull Handles
Shower seats and brackets
Paper towel dispensers
Waste receptacles
Powder coated aluminium trim



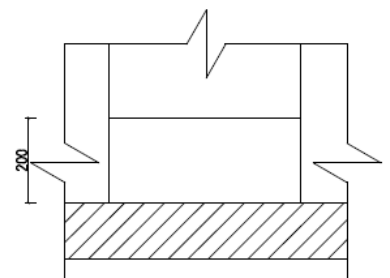
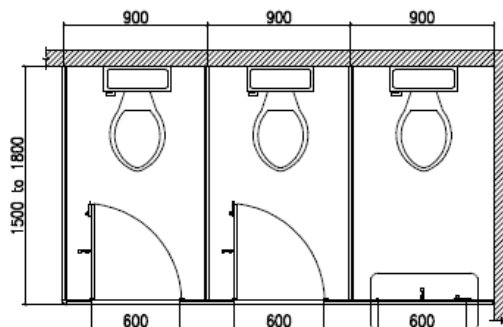
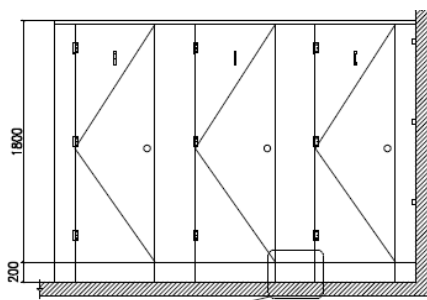
DIMENSIONS AND INSTALLATION

Width and depth vary to suit application
Doors: Standard 600mm (560mm opening)
Accessible 800mm (760mm minimum opening),
Sliding doors on request
Standard panel height is 1800mm on 200mm blade wraps

KerMac includes installation within the Auckland region.
Alternatively, cubicles can be flat packed and shipped
anywhere in the Australasian and Pacific region with
installation instructions included.



CAD DRAWINGS



Larger CAD Drawings available on www.kermac.co.nz in PDF, DWG and DXF formats