

## K-COMPACT

The K-Compact system is constructed from compact laminate which is a strong, durable and moisture resistant material. While this system is strong, robust and widely applicable to many applications, it is also one of KerMac's affordable solutions. The use of machine edging instead of anodised aluminium edge trim provides a smooth, modern form while lowering cost. K-Compact is an excellent choice for shower and wet area applications.



### LAMINATE TO CHOOSE FROM:

#### COMPACT LAMINATES

KerMac Compact  
Laminex Compact

Swiss CDF (not for wet areas, 5 year warranty)

### APPLICATIONS

General Purpose  
Wet or dry areas  
High Humidity  
Shower applications

### FEATURES

Cast pedestal  
Anodised aluminium channels  
Cast locks, coat hooks and SS fastenings  
Bolt through spring open or close hinges



## STANDARD MATERIALS

13mm thick Compact laminated board  
Non-standard facing panels made to order  
Machine edged compact laminate

### **Optional Accessories:**

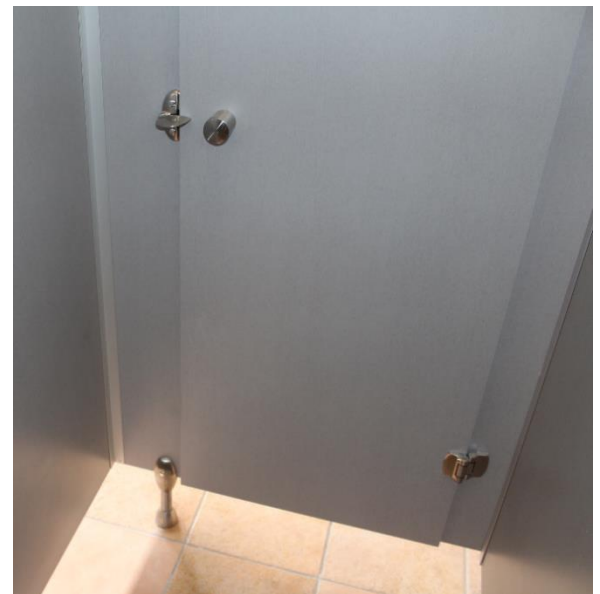
Toilet roll holders  
Grab Rails  
Pull Handles  
Shower seats and brackets  
Paper towel dispensers  
Waste receptacles



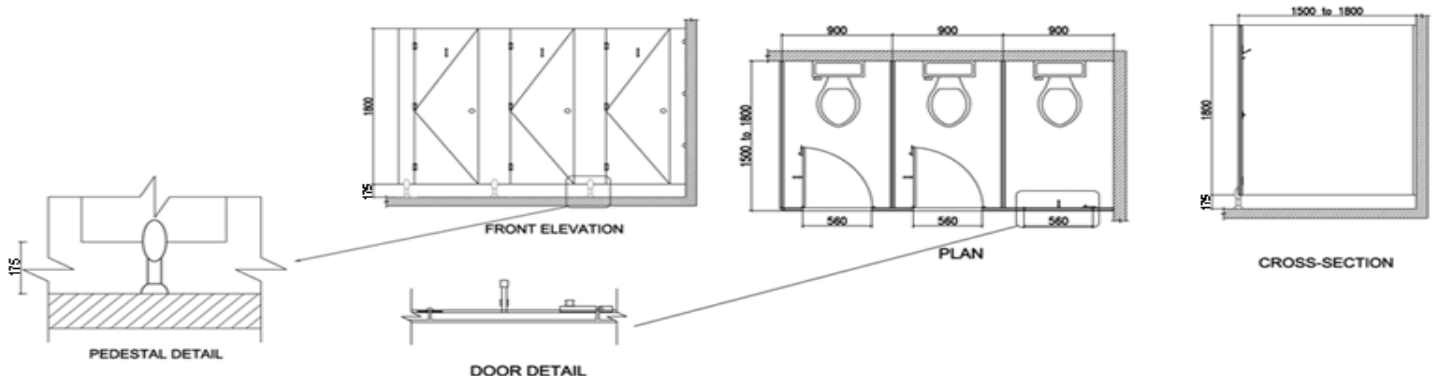
## DIMENSIONS AND INSTALLATION

Width and depth vary to suit application  
Doors: Standard 600mm (560mm opening),  
Accessible 800mm (760mm minimum opening),  
Sliding doors on request  
Standard panel height is 1800mm on 150-175mm pedestals

KerMac includes installation within the Auckland region.  
Alternatively, cubicles can be flat packed and shipped anywhere  
in Australasia and Pacific region with installation instructions  
included.



## CAD DRAWINGS



Larger CAD Drawings available on [www.kermac.co.nz](http://www.kermac.co.nz) in PDF, DWG and DXF formats